

**EDGEWOOD**

INDEPENDENT ♦ SCHOOL ♦ DISTRICT

**SCHOOLS OF INNOVATION**

ENGAGE ♦ TRANSFORM ♦ INSPIRE



# FINE ARTS ACADEMY @ STAFFORD ELEMENTARY



**97%**

Hispanic

**1%**

African  
American

**83%**

At Risk

**27%**

ELs

**100%**

Economically  
Disadvantaged

# VISION 2025

## DISTRICT MISSION

Edgewood ISD provides an exceptional learning experience that engages, empowers, and prepares students to compete and reach their highest potential in an ever changing world.

## DISTRICT VISION

For every child, success in life. Edgewood Proud!

## CORE VALUES

- Professionalism
- Accountability
- Communication

## DISTRICT OUTCOME

To graduate all students career-, college- or military-ready per their expected date of graduation.

## DISTRICT GOALS

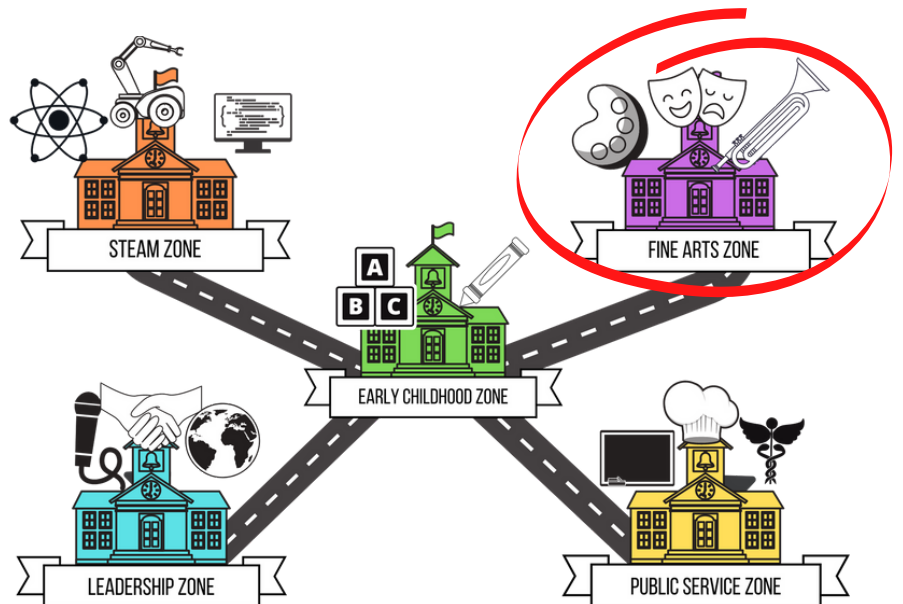
1. Focus on Student Success
2. Focus on Students, Families, & Community
3. Focus on Operational Excellence
4. Focus on Employee & Organizational Improvement
5. Focus on Financial Stewardship

## INNOVATION ZONES



## OUR INNOVATION FOCUS

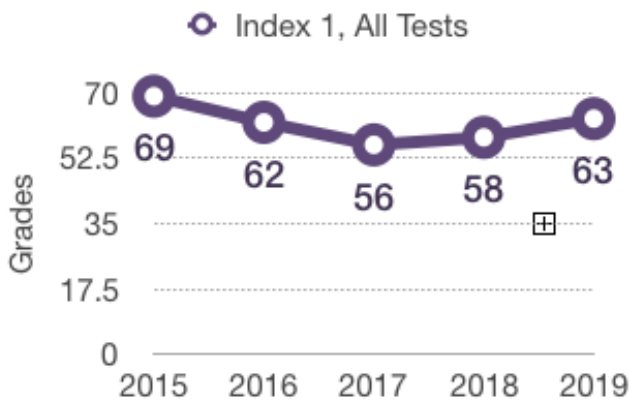
Stafford will join the Performing Arts Innovation Zone in August 2021.



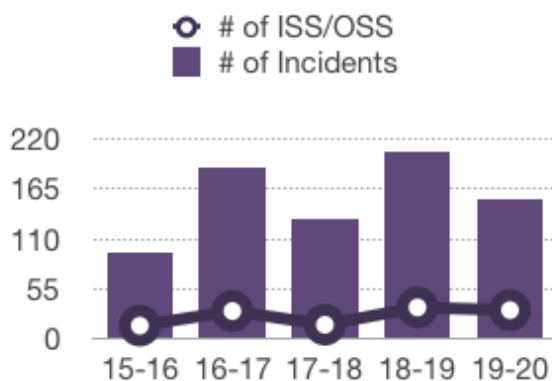


# QUICK FACTS

## TEA ACCOUNTABILITY



## DISCIPLINE



## PERSONNEL

In the last eight academic years:

- Stafford has averaged less educator turnover than other EISD campuses
- Currently 29 classroom teachers:
  - 4 have 0-3 years of teaching experience
  - 8 have 4-10 years of teaching experience
  - 17 have 11+ years of teaching experience

## FINANCIALS

- Current ADA weights: 466
- Projected Enrollment for 2021-2022: 384
- Per pupil allotment projections for 2021-2022: \$6,160
- SB 1882 projected allotment: \$405,233 (all students)
- District SB 1882 percentage: 8.9%
- All financial data are based on current projections, are subject to change, and are for estimation purposes

## ATTENDANCE

- Student Attendance Rate: 92% (as of 4/30/21)



# CURRICULUM & INSTRUCTION

BUCK INSTITUTE FOR EDUCATION

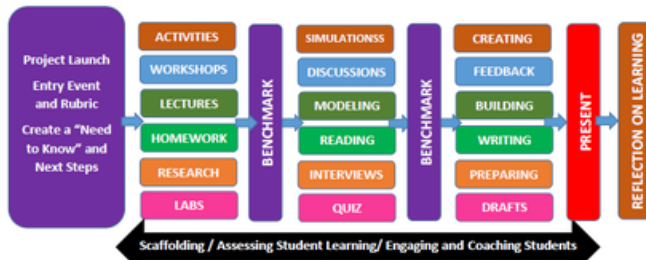
## PBLworks

### PBL PROCESS

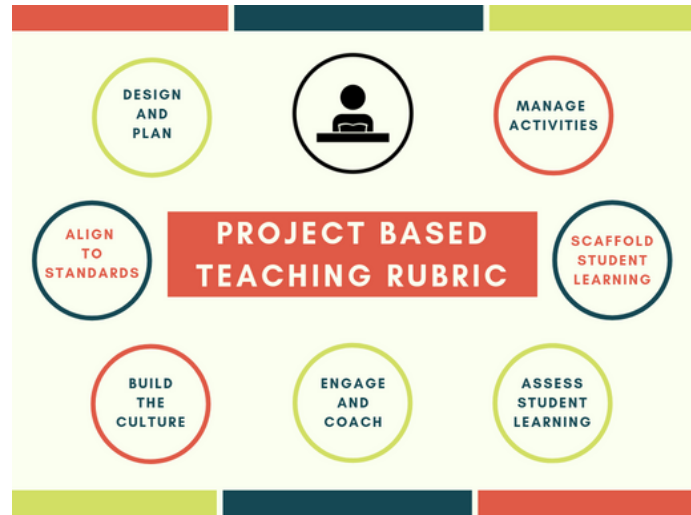
Traditional Unit With Culminating Project:



Project-Based Learning Unit:

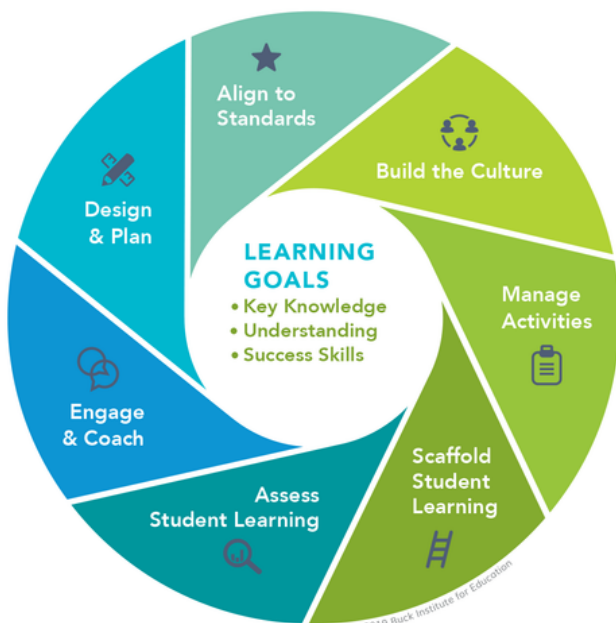


Adapted from <http://www.teachthought.com/learning/difference-between-doing-projects-and-project-based-learning/>



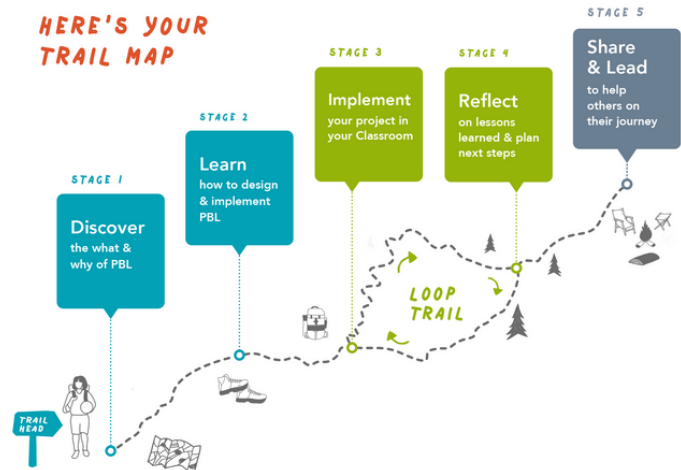
### Gold Standard PBL

Seven Project Based Teaching Practices



© 2019 Buck Institute for Education

### HERE'S YOUR TRAIL MAP



### OTHER INSTRUCTIONAL CONSIDERATIONS

- K-5 Elementary School
- Fine Arts Zone
- Project Based Learning (PBL) Instructional Model
- Design Thinking Integration





# PARTNER EXPECTATIONS

## EXPECTATIONS FOR 1882 OPERATING PARTNERS

- Retention of all staff as Edgewood employees
- Percent retention of SB 1882 funds: 8.9%
- Adherence to School Performance Framework
- Open Enrollment with no academic entrance criteria
- Operating partner must have an employee assigned to the campus that serves daily.
- Principal manages the entire building during rollout
- PBL in grades K-5
- Design Thinking Units Integrated into the scope and sequence
- Planned Grade level phase in (beginning with K-2nd in 2022)

## READY TO START?

To apply for an SB 1882 Partnership with EISD please visit our [website](#).

Contact Crissy Franco, Senior Director of Innovation at Edgewood ISD, for further information at (210) 898-4021 or [Crissy.Franco@eisd.net](mailto:Crissy.Franco@eisd.net)

## IMPORTANT QUALITIES

